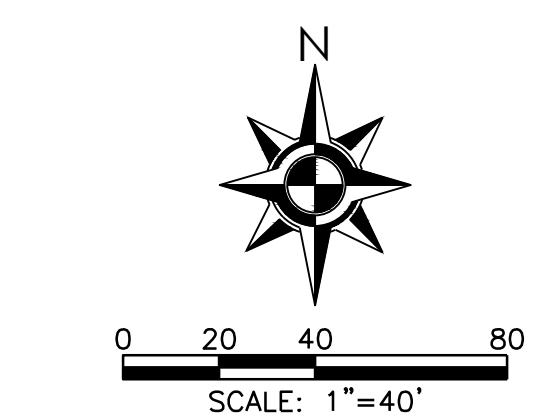
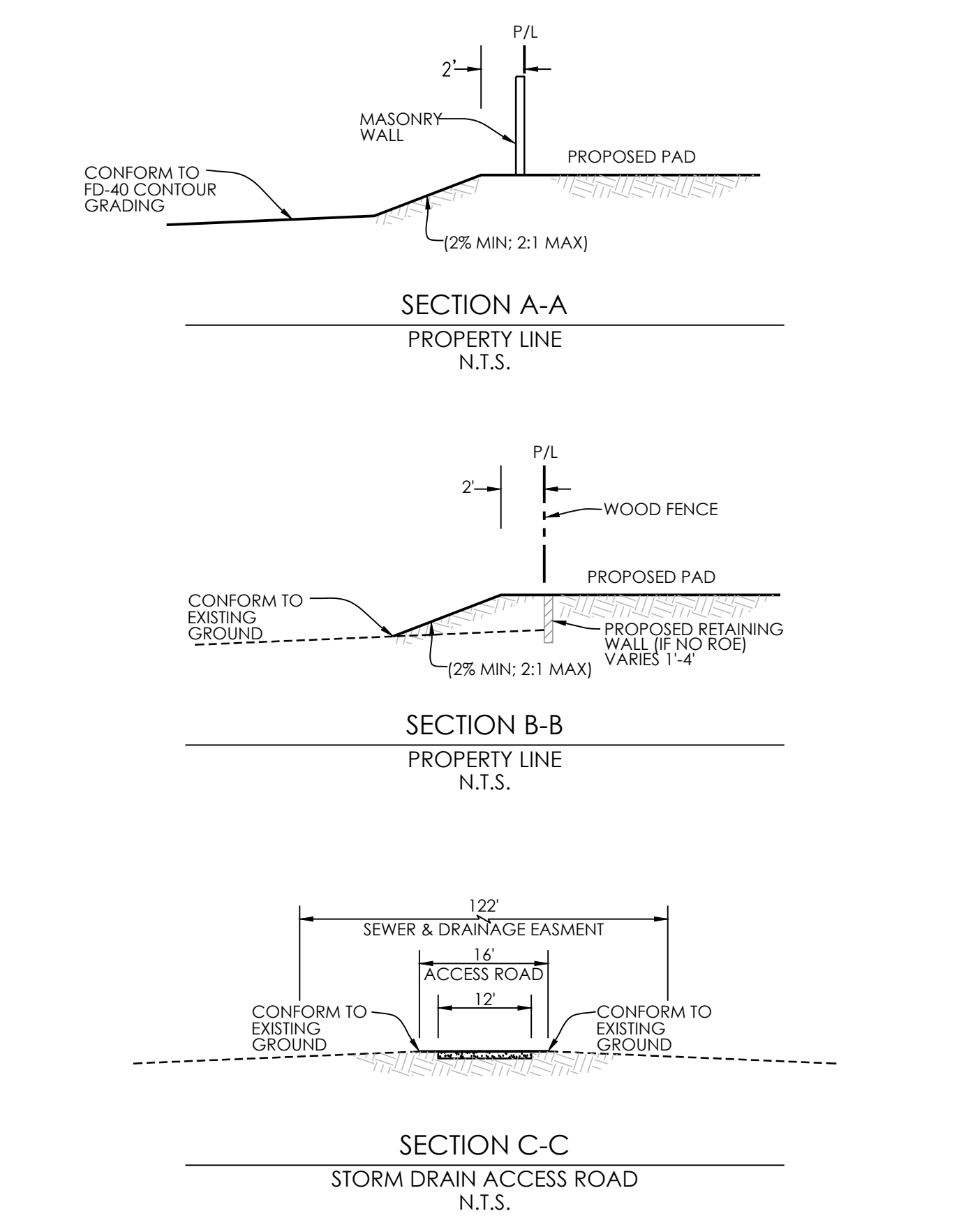


PROPOSED	DESCRIPTION	EXISTING
	SANITARY SEWER PIPE	
	SANITARY SEWER MANHOLE	
	WATER LINE	
	RECYCLED WATER LINE	
	GATE VALVE	
	FIRE HYDRANT	
	BLOW-OFF VALVE	
	STORM DRAIN PIPE	
	STORM DRAIN MANHOLE	
	DROP INLET	
	STORMWATER FACILITY	
	PAD GRADE	
	OVERLAND RELEASE FOR DRAINAGE	
	MASONRY WALL WITH PLASTERS	

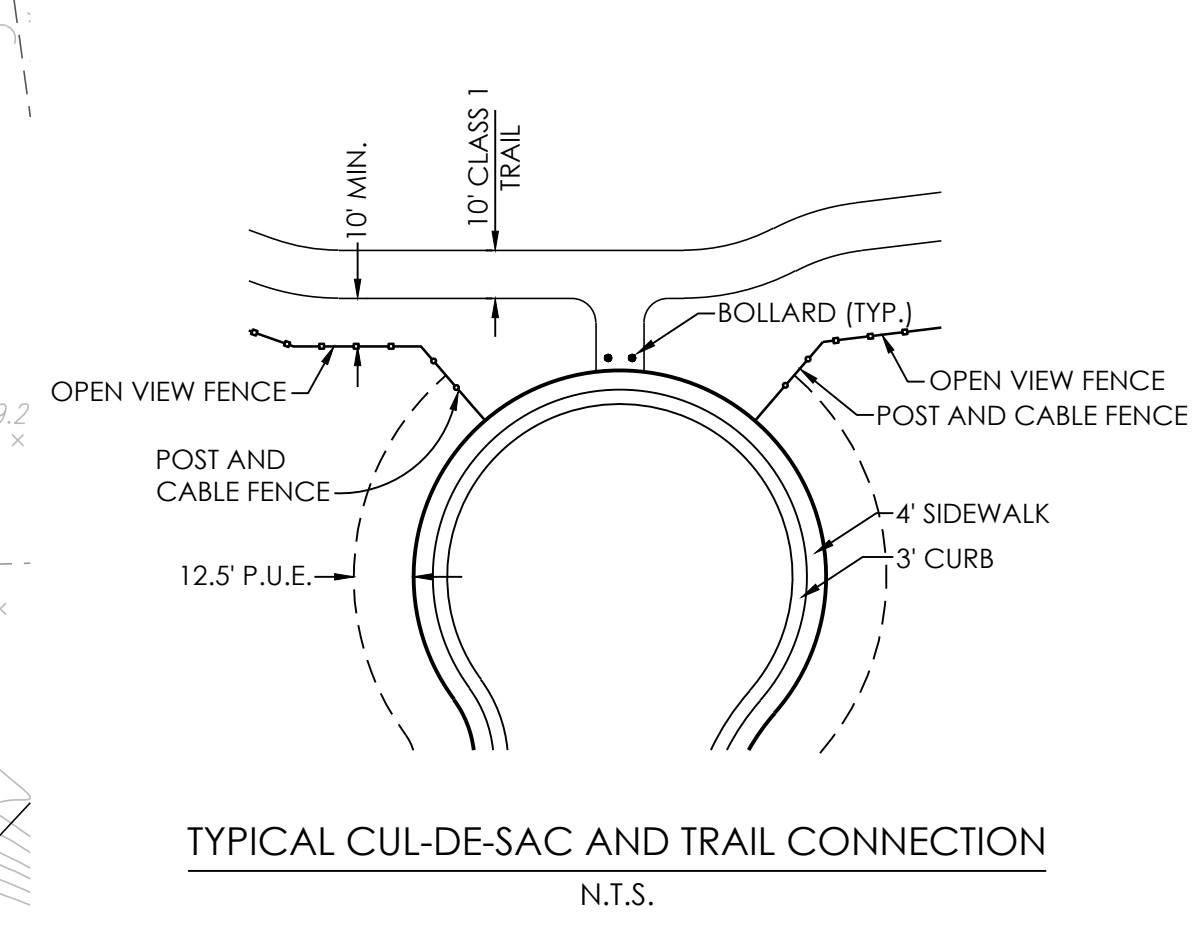
- UTILITY NOTES**
- ALL EXISTING UTILITY LOCATIONS SHOWN ARE APPROXIMATE.
 - UTILITIES MAY BE PHASED DEPENDING UPON THE DEVELOPMENT SEQUENCE OF THE PROJECT. SUBJECT TO THE REVIEW OF THE CITY OF ROSEVILLE.
 - THE SIZE AND LOCATION OF PROPOSED WATER, RECYCLED WATER, SEWER, AND STORM DRAINAGE INFRASTRUCTURE IS SUBJECT TO CHANGE DURING FINAL DESIGN. SUBJECT TO REVIEW AND APPROVAL BY THE CITY OF ROSEVILLE WITH IMPROVEMENT PLANS.
 - ANY OFFSITE GRADING SHALL REQUIRE RIGHT OF ENTRY FROM ADJOINING PROPERTY OWNERS. IF A RIGHT OF ENTRY CANNOT BE OBTAINED, RETAINING WALLS ALONG PROPERTY LINES ARE TO BE CONSTRUCTED AS SHOWN HEREON.



CONCEPTUAL GRADING, DRAINAGE, & UTILITIES TENTATIVE SUBDIVISION MAP

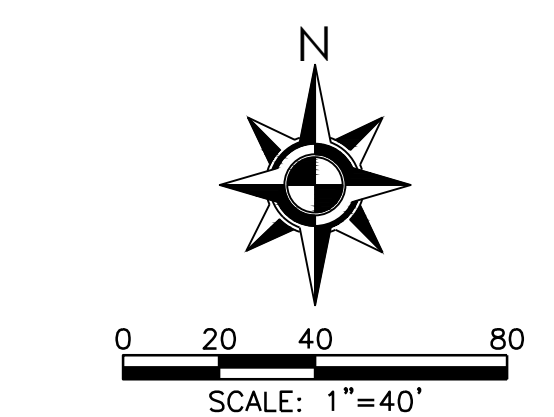
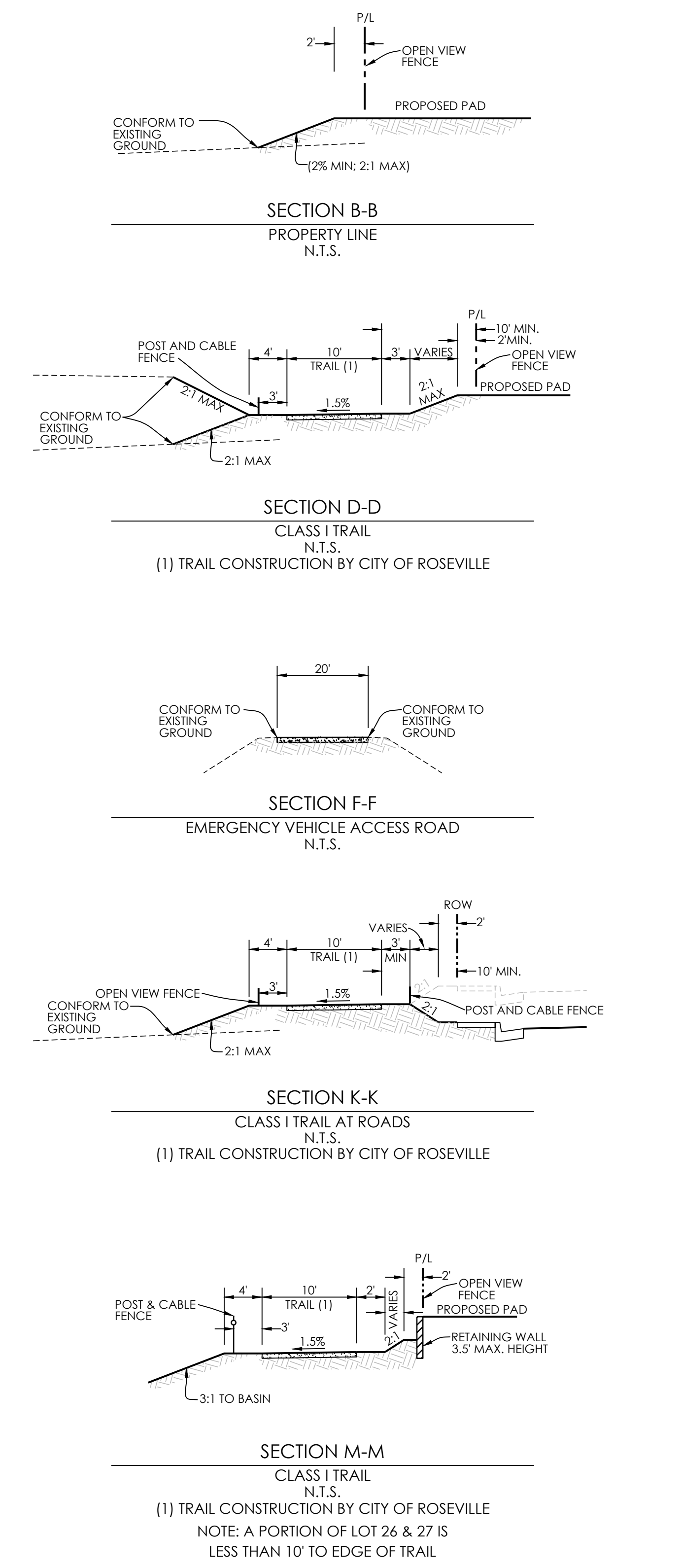
SOLAIRE PHASE 6

Parcel FD-2, FD-5 and FD-9 of the Sierra Vista Specific Plan



PROPOSED	DESCRIPTION	EXISTING
	SANITARY SEWER PIPE	
	SANITARY SEWER MANHOLE	
	WATER LINE	
	RECYCLED WATER LINE	
	GATE VALVE	
	FIRE HYDRANT	
	BLOW-OFF VALVE	
	STORM DRAIN PIPE	
	STORM DRAIN MANHOLE	
	DROP INLET	
	STORMWATER FACILITY	
	PAD GRADE	
	OVERLAND RELEASE FOR DRAINAGE	
	MASONRY WALL WITH PILASTERS	

- UTILITY NOTES**
1. ALL EXISTING UTILITY LOCATIONS SHOWN ARE APPROXIMATE.
 2. UTILITIES MAY BE PHASED DEPENDING UPON THE DEVELOPMENT SEQUENCE OF THE PROJECT, SUBJECT TO THE REVIEW OF THE CITY OF ROSEVILLE.
 3. THE SIZE AND LOCATION OF PROPOSED WATER, RECYCLED WATER, SEWER, AND STORM DRAINAGE INFRASTRUCTURE IS SUBJECT TO CHANGE DURING FINAL DESIGN, SUBJECT TO REVIEW AND APPROVAL BY THE CITY OF ROSEVILLE WITH IMPROVEMENT PLANS.
 4. ANY OFFSITE GRADING SHALL REQUIRE RIGHT OF ENTRY FROM ADJOINING PROPERTY OWNERS. IF A RIGHT OF ENTRY CANNOT BE OBTAINED, RETAINING WALLS ALONG PROPERTY LINES ARE TO BE CONSTRUCTED AS SHOWN HEREON.

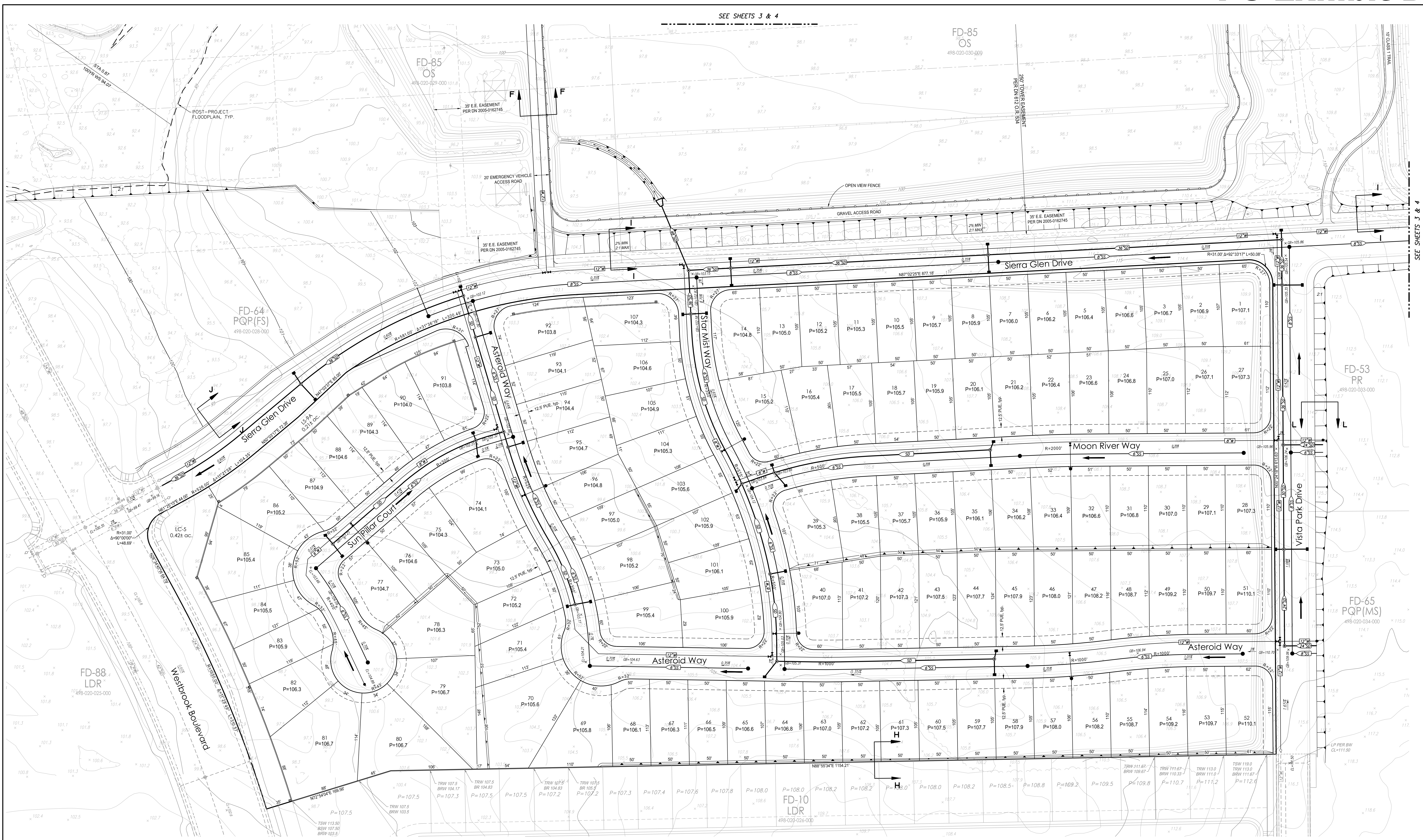


CONCEPTUAL
GRADING, DRAINAGE, & UTILITIES
TENTATIVE SUBDIVISION MAP

SOLAIRE PHASE 6

Parcel FD-2, FD-5 and FD-9 of the Sierra Vista Specific Plan

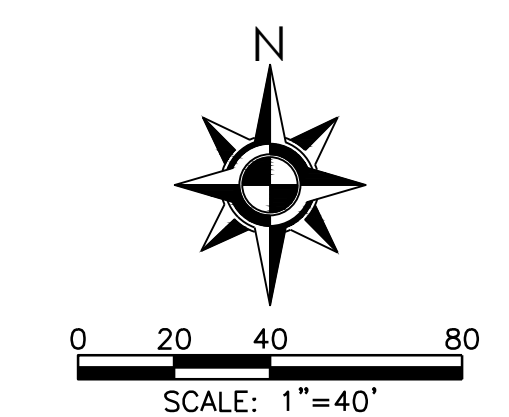
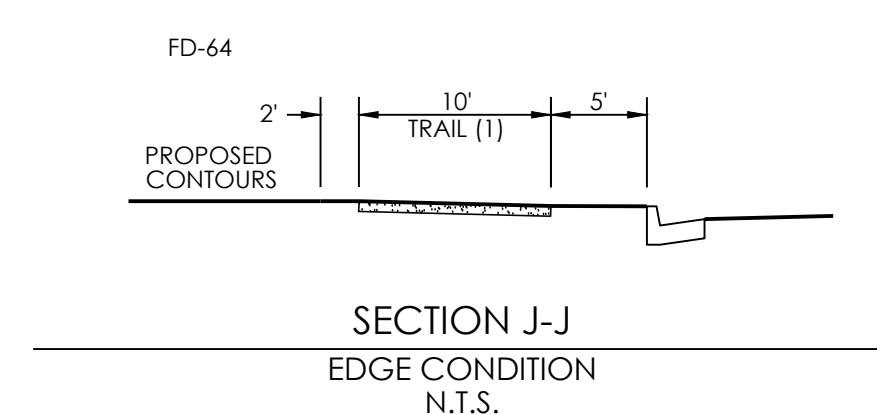
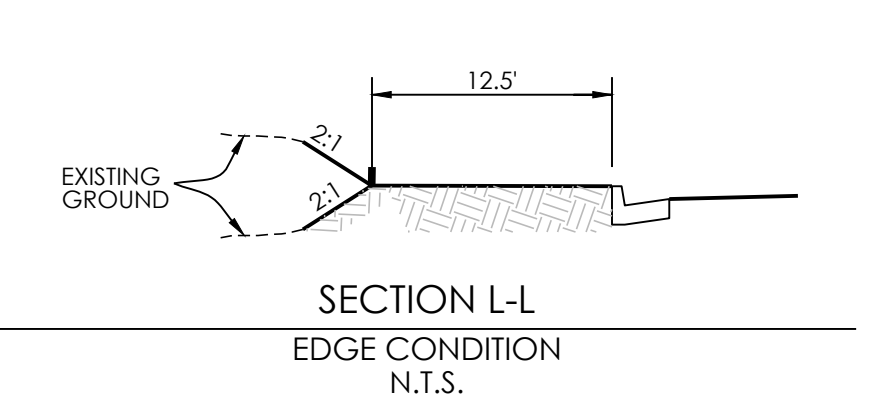
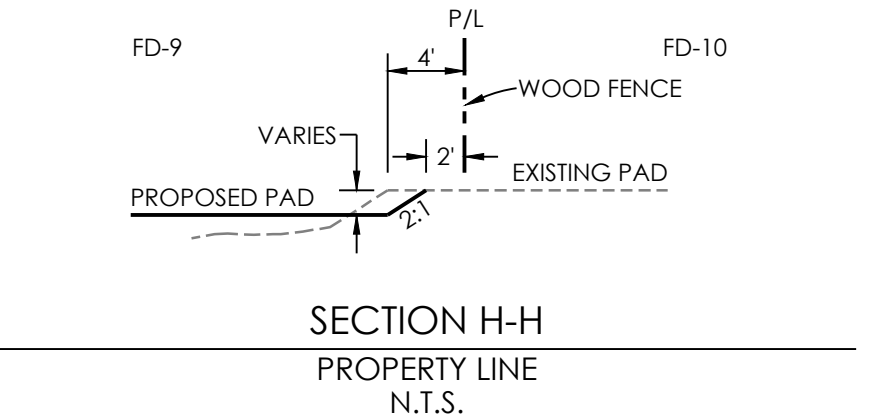
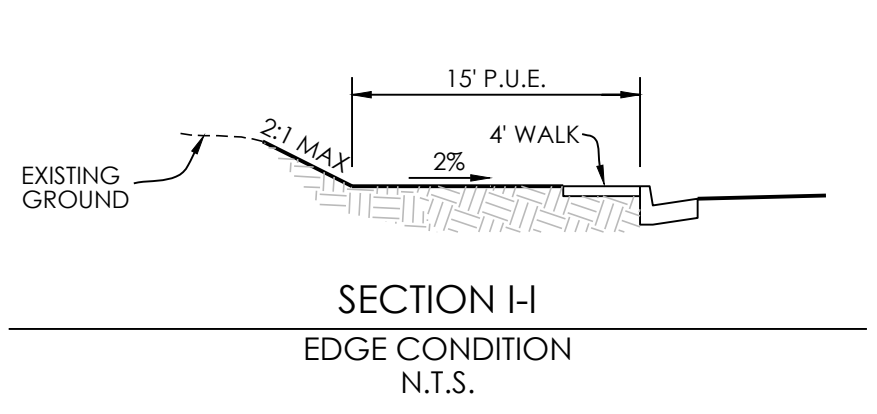
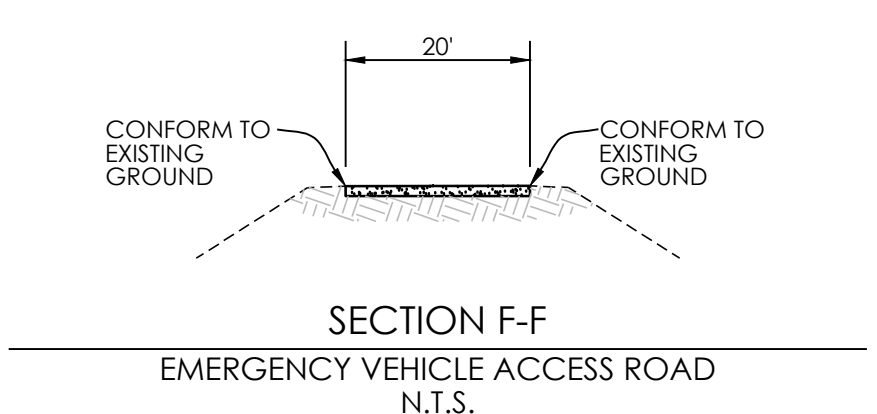
SEE SHEETS 3 & 4



PROPOSED	DESCRIPTION	EXISTING
	SANITARY SEWER PIPE	
	SANITARY SEWER MANHOLE	
	WATER LINE	
	RECYCLED WATER LINE	
	GATE VALVE	
	FIRE HYDRANT	
	BLOW-OFF VALVE	
	STORM DRAIN PIPE	
	STORM DRAIN MANHOLE	
	DROP INLET	
	STORMWATER FACILITY	
	PAD GRADE	
	OVERLAND RELEASE FOR DRAINAGE	
	MASONRY WALL WITH PILASTERS	

UTILITY NOTES

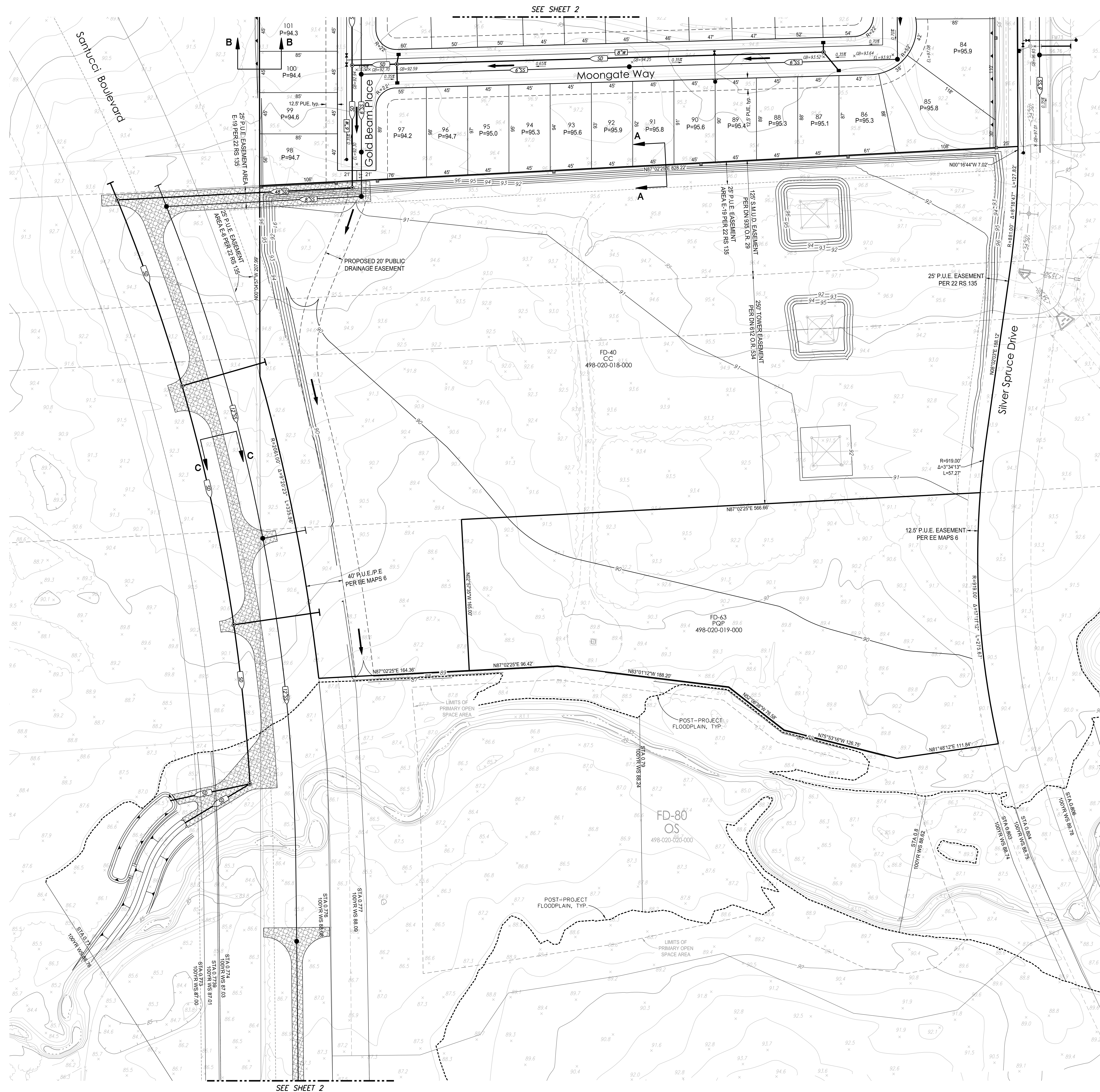
- ALL EXISTING UTILITY LOCATIONS SHOWN ARE APPROXIMATE.
- UTILITIES MAY BE PHASED DEPENDING UPON THE DEVELOPMENT SEQUENCE OF THE PROJECT, SUBJECT TO THE REVIEW OF THE CITY OF ROSEVILLE.
- THE SIZE AND LOCATION OF PROPOSED WATER, RECYCLED WATER, SEWER, AND STORM DRAINAGE INFRASTRUCTURE IS SUBJECT TO CHANGE DURING FINAL DESIGN, SUBJECT TO REVIEW AND APPROVAL BY THE CITY OF ROSEVILLE WITH IMPROVEMENT PLANS.
- ANY OFFSITE GRADING SHALL REQUIRE RIGHT OF ENTRY FROM ADJOINING PROPERTY OWNERS. IF A RIGHT OF ENTRY CANNOT BE OBTAINED, RETAINING WALLS ALONG PROPERTY LINES ARE TO BE CONSTRUCTED AS SHOWN HEREON.



CONCEPTUAL
GRADING, DRAINAGE, & UTILITIES
TENTATIVE SUBDIVISION MAP

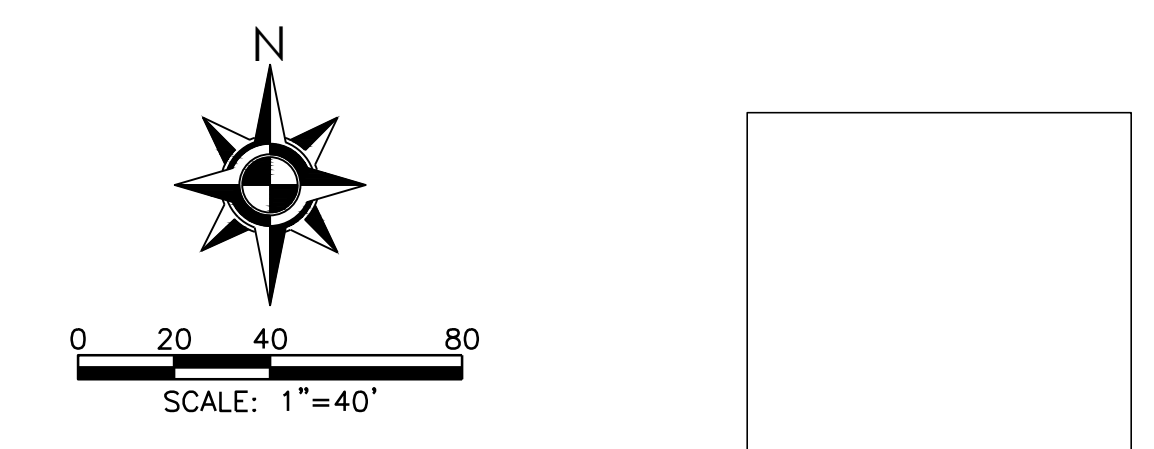
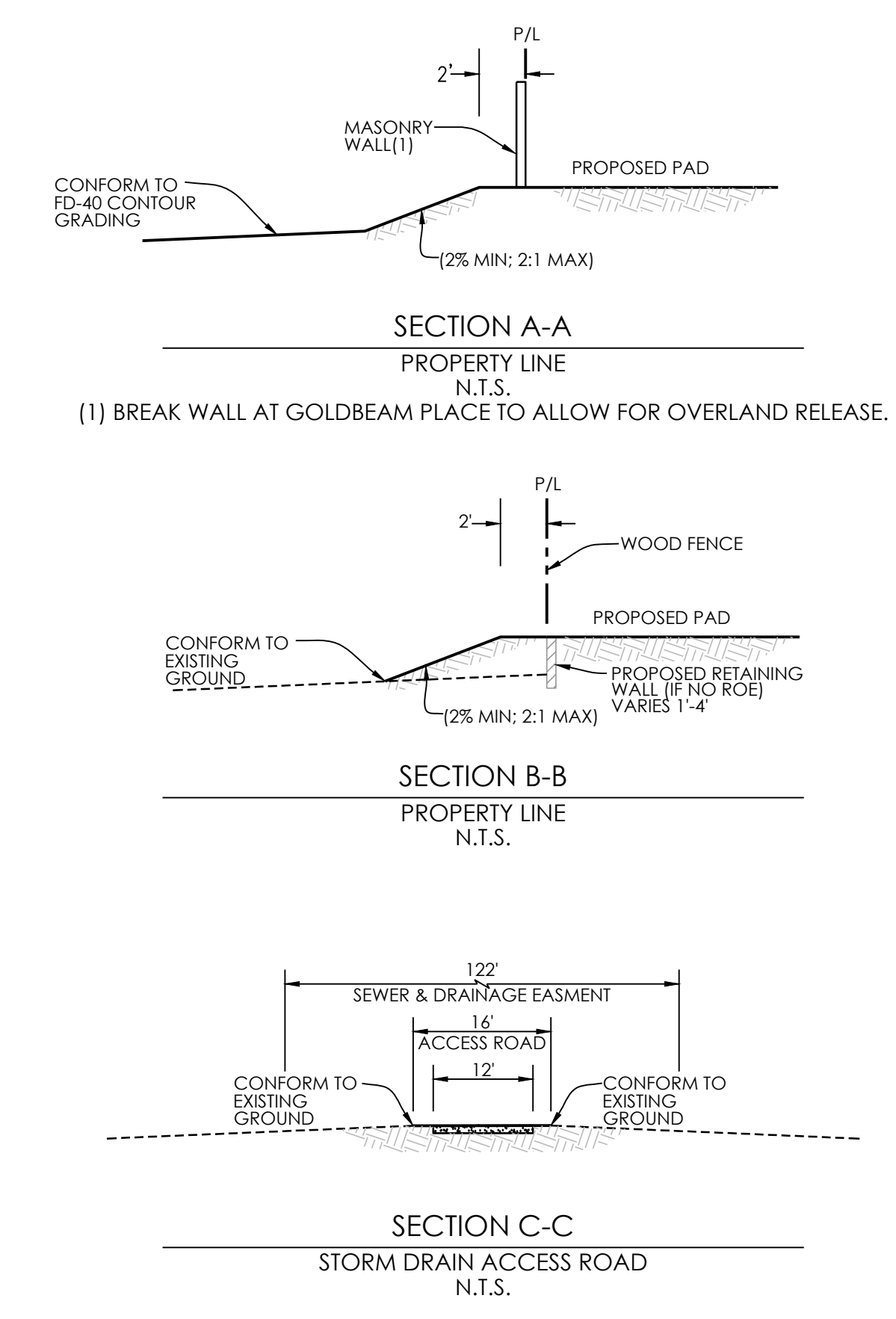
SOLAIRE PHASE 6

Parcel FD-2, FD-5 and FD-9 of the Sierra Vista Specific Plan



PROPOSED	DESCRIPTION	EXISTING
	SANITARY SEWER PIPE	
	SANITARY SEWER MANHOLE	
	WATER LINE	
	RECYCLED WATER LINE	
	GATE VALVE	
	FIRE HYDRANT	
	BLOW-OFF VALVE	
	STORM DRAIN PIPE	
	STORM DRAIN MANHOLE	
	DROP INLET	
	STORMWATER FACILITY	
	PAD GRADE	
	OVERLAND RELEASE FOR DRAINAGE	
	MASONRY WALL WITH PLASTERS	

- UTILITY NOTES**
- ALL EXISTING UTILITY LOCATIONS SHOWN ARE APPROXIMATE.
 - UTILITIES MAY BE PHASED DEPENDING UPON THE DEVELOPMENT SEQUENCE OF THE PROJECT. SUBJECT TO THE REVIEW OF THE CITY OF ROSEVILLE.
 - THE SIZE AND LOCATION OF PROPOSED WATER, RECYCLED WATER, SEWER, AND STORM DRAINAGE INFRASTRUCTURE IS SUBJECT TO CHANGE DURING FINAL DESIGN. SUBJECT TO REVIEW AND APPROVAL BY THE CITY OF ROSEVILLE WITH IMPROVEMENT PLANS.
 - ANY OFFSITE GRADING SHALL REQUIRE RIGHT OF ENTRY FROM ADJOINING PROPERTY OWNERS. IF A RIGHT OF ENTRY CANNOT BE OBTAINED, RETAINING WALLS ALONG PROPERTY LINES ARE TO BE CONSTRUCTED AS SHOWN HEREON.



CONCEPTUAL
GRADING, DRAINAGE, & UTILITIES
TENTATIVE SUBDIVISION MAP

SOLAIRE PHASE 6

Parcel FD-2, FD-5 and FD-9 of the Sierra Vista Specific Plan